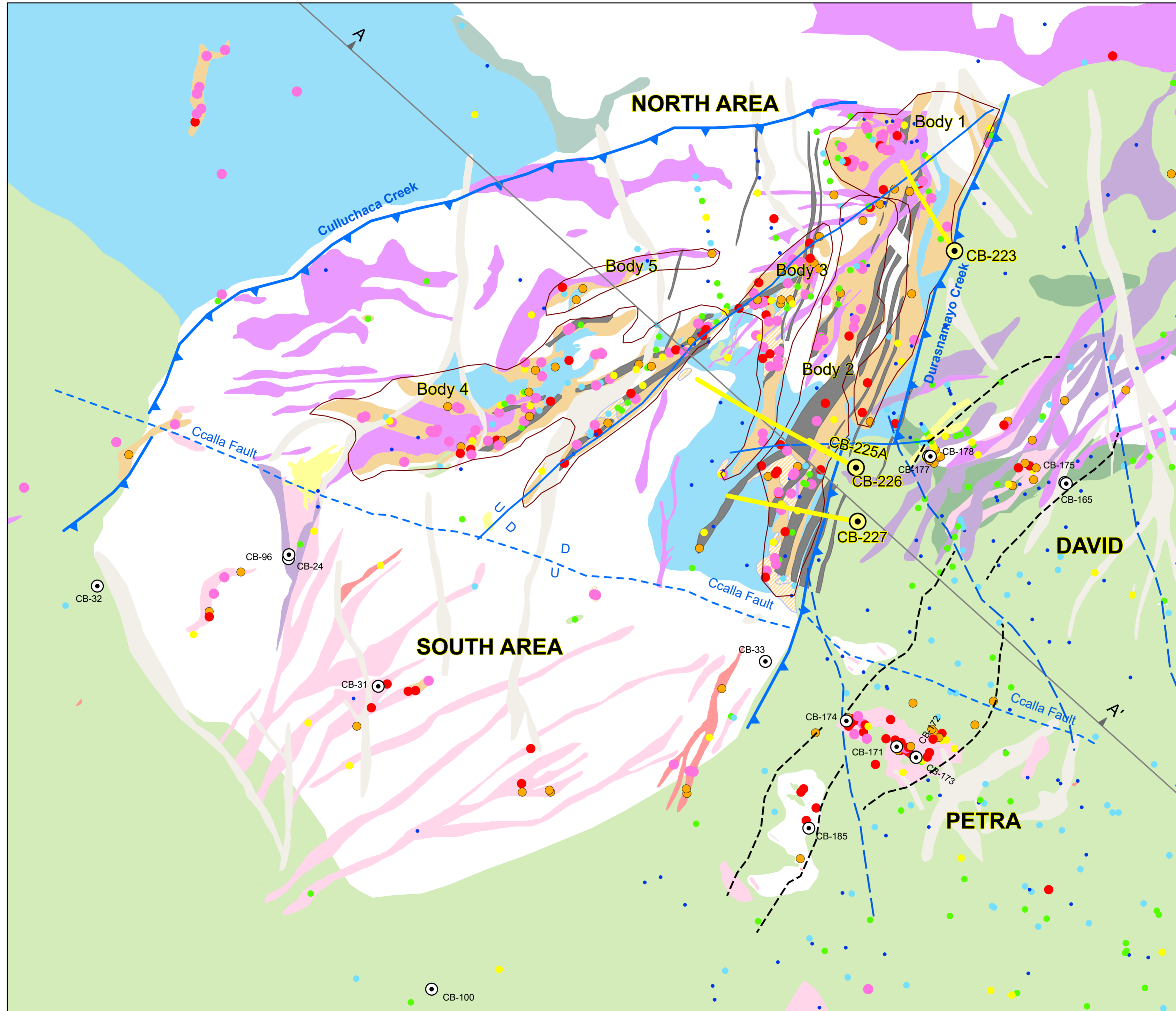


# NW Pit Target



## Lithology

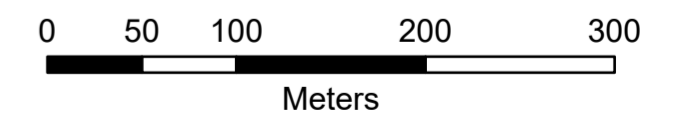
- COV Overburden
- CLZ Limestone
- QTZ Quartzite
- Igneous & Volcanic
- QMP1 Quartz Monzonite Early
- QMP2 Quartz Monzonite Intermineral
- QMP3 Quartz Monzonite Late
- LAT Latite
- GRD Granodiorite
- DIO Diorite
- MNZ Monzonite
- AND Andesite
- SKMGN Garnet Skarn
- SKMGN Magnetite Skarn

## Legend

- ⊙ Drill hole Executed before 2018
- ⊙ Drill Hole Executed - 2023
- - - Inferred Fault
- ▲ Overthrusting Faulting
- Geochem Limit
- Cross Section Line

## ROCK CHIP Cu %

- <0.01
- 0.01 - 0.02
- 0.02 - 0.05
- 0.05 - 0.10
- 0.10 - 0.20
- 0.20 - 0.50
- >0.50



**PANORO APURIMAC S.A.**

Project: **COTABAMBAS**

Descripción: **Lithology**